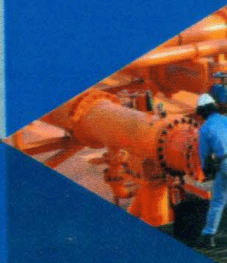
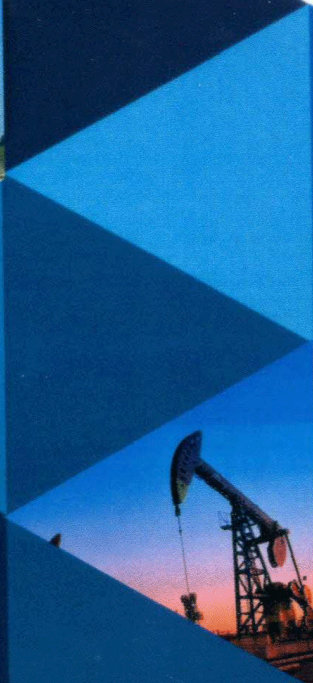
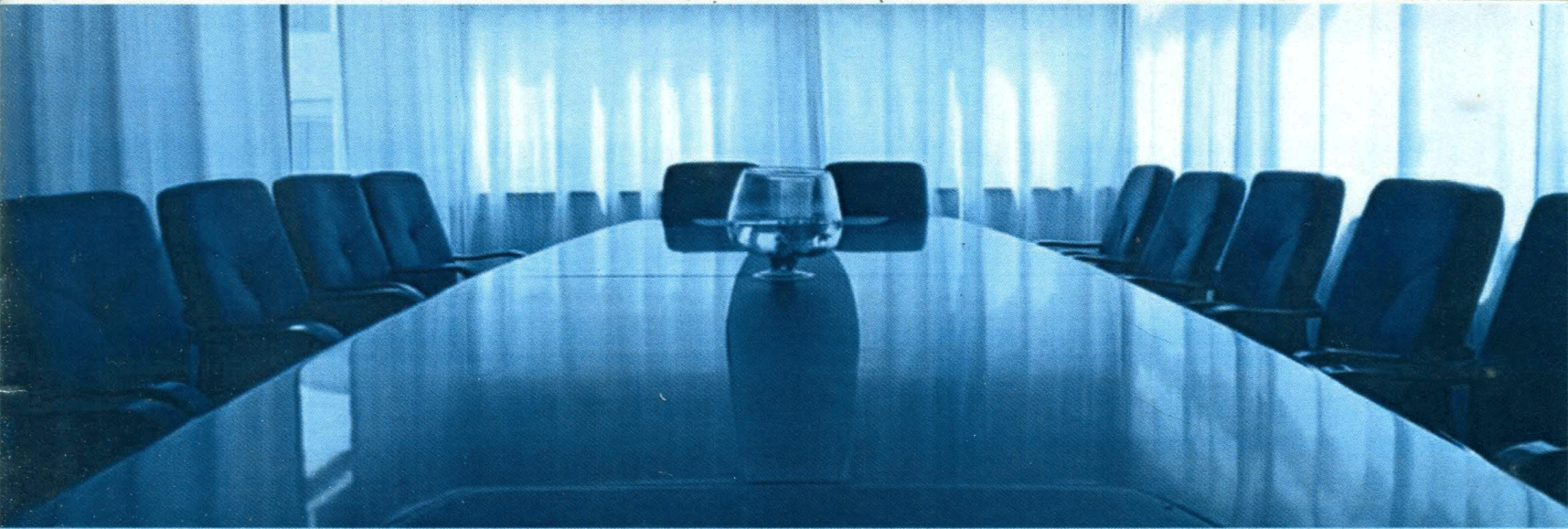




PRUDENTIAL CONCERNS & SERVICES NIGERIA LIMITED



CORPORATE **BROCHURE**



ABOUT US

Prudential Concerns & Services Nigeria Limited is an Nigerian owned company, incorporated in 2002 under the Companies & Allied Matters Act of 1990 (Laws of the Federal Republic of Nigeria), with registered address at #3 Fugro Avenue, Off Odani Road, Eelenwo (By Eleme- Akpajo Expressway) Port Harcourt, Rivers State, to provide Technical and engineering services in the Nigerian oil & gas industry, and sub-Saharan Africa.

As an indigenous engineering company, Prudential Concerns is managed by a team of qualified, experienced and highly dedicated Nigerian professionals who are committed to excellence.

PCSL combines reliability, competence, quality and technology to deliver precise engineering solutions, which includes; Wellhead Facility Maintenance & Consultations, Materials Procurement & Storage, Gauge & Sampling, Slickline & Wireline Services, all with a dedicated team of Engineers set to achieve project goals.

With robust human and capital resources in place, we are able to maintain a steady growth and meet increasing demand for our services. In deploying engineering solutions to our clients, we employ superior quality assurance & quality control (QA/QC) techniques alongside a strong emphasis on HSE, staff training and community relations. Our project management technique enables us to manage projects more efficiently from start to finish and to evaluate and manage risk-factors at every stage.

With years of experience and continuous investment in people and equipment, we have experienced tremendous growth. We have fully functional units around key locations in Nigeria with standby engineers, technicians and equipment's enabling us to mobilize efficiently and on time to client's locations.

Client's satisfaction is a key element of our business strategy and our performance evaluation process is based on the level of satisfaction we deliver. Our clients enjoy the benefits that partnership brings, and working together; we aim to use profound critical engineering solutions to out-perform our competitors.



OUR CORE VALUES:

Uncompromising commitment to Quality, Health, Safety and Environment

Transparency, Accountability and Discipline in our business

Client satisfaction

An open relationship with our employees based on mutual trust, respect and success

Best in class Risk Awareness

Financial Responsibility to all our stakeholders



OBJECTIVES

1. To satisfy clients by meeting demands and standards.
2. To improve performance to withstand competition
3. To achieve efficiency in production and cost Reduction.
4. To Work safely and to avoid preventable accidents.

From the foregoing, utmost importance is given to conformance with internationally and locally acceptable quality standards, which is also intended to sustain PCSL is the competition market. Management is to provide services and products, which are in conformity with BS/ISO 9001 standard and, to client's contractual requirements. To fulfil this objective, the company (PCSL) has decided to adopt the Quality Assurance system and Programme as outlined in its Our QA/QC manual.

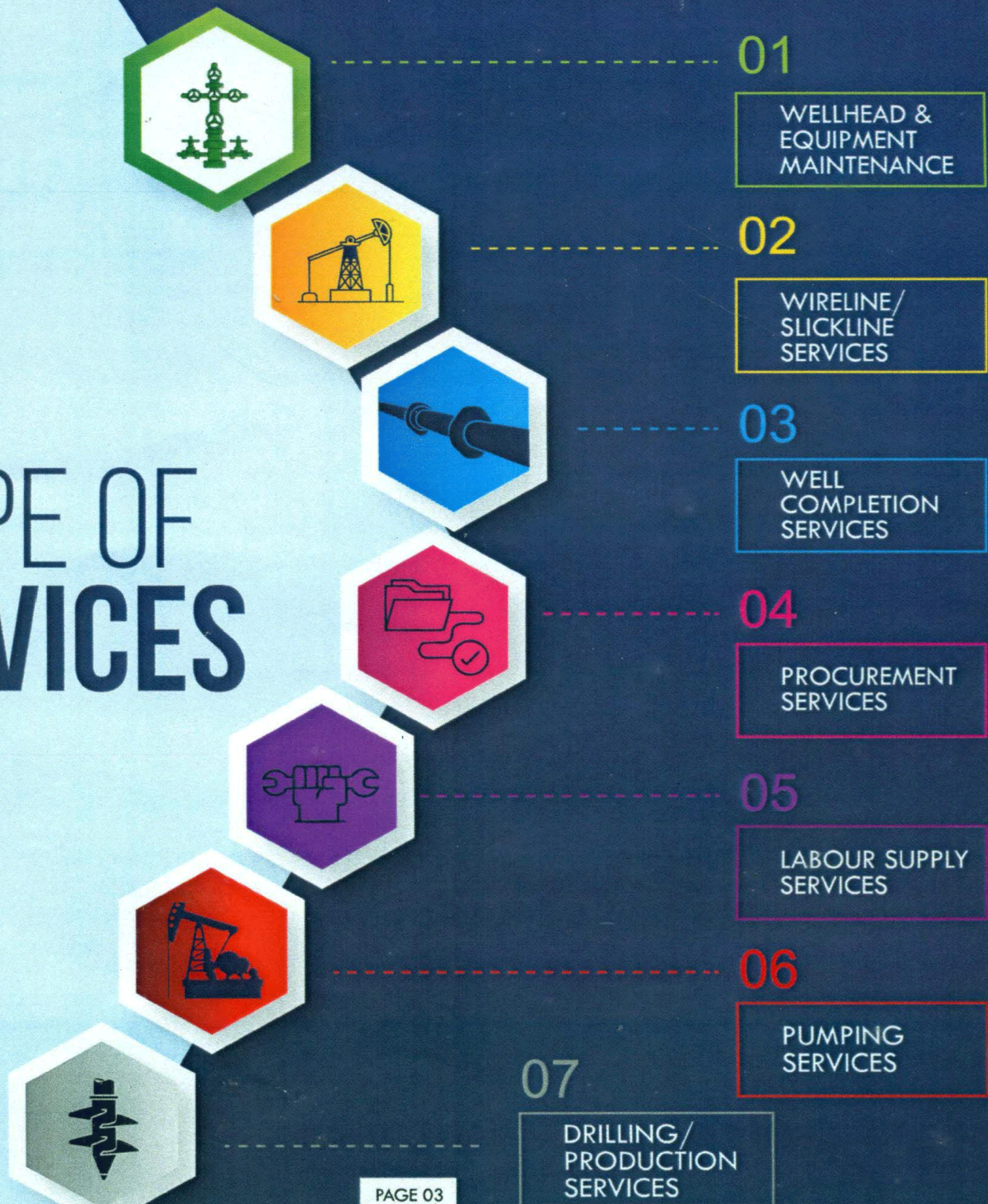
The Quality Management 'focal Person' has the full support of PCSL' Management to implement all measures contained in the quality System/Manual. This Person directly report to the managing Director and, has no functional primary responsibility or conflict of interest with any department within PCSL.

It is required of all Personnel, to operate in strict accordance with the system's improvement of quality Management System.

To this end therefore, the company's policy remains that, all activities by individual or teams, will be planned and executed in such a way that, our clients' requirements as well as PCSL Business objectives are safely, efficiently and cost-effectively met.



SCOPE OF SERVICES



WELLHEAD AND EQUIPMENT MAINTENANCE

Our wellhead maintenance (WHM) service forms a key part of our operations and well capability – from new HP/HT developments – through to the mature brown field site. This includes the routine inspection, repair and maintenance of surface wellheads, as well as the provision of pressure testing services.

Prudential's WHM department can provide three different types of maintenance services, which includes, but are not limited to Full wellhead maintenance

▶ FIRST LINE MAINTENANCE (FLM)

▶ SECOND LINE MAINTENANCE (SLM)

Our wellhead maintenance services are designed to eliminate hazards and re-establish wellhead security and integrity. Repairs are performed with minimum disruption to onsite operations and businesses.

WIRELINER/SLICKLINE SERVICES

Wire line is a cabling technology used to lower equipment or measuring devices into a well for the purposes of well interventions and reservoir evaluation. Our range of services includes;

1. Bottom-hole pressure and temperature surveys
2. Wire line plug and sleeve work
3. Bottom-hole sampling
4. Mechanical or electronic pressure recorder rentals
5. E.U.B. compatible test reports

Our Slickline operations involve maintenance, such as the removal of wax, scale, sand and fill build-ups, terminating flow and setting hydraulic packers using sealing plugs, gauge cutting, setting or removing plugs, deploying or removing wire-line, retrievable valves and memory logging of down-hole logs using Memory Production Logging Tools (MPLT) and down-hole vision (using run-in cameras).

ELECTRIC WIRE-LINE OPEN-HOLE SERVICES

Dual Induction Log Dual Laterolog Micro Laterolog Litho Density Log
Dual Detector Neutron Porosity Log
Spectral Gamma-Ray Log
Gamma-Ray Log
Full Waveform Acoustic Log Acoustic Borehole Imager Four Arm Caliper Log
Four Arm Deepmeter Log Acoustic Borehole Imager Formation Tester and Sampling Tool

CASED-HOLE SERVICES

GR-CCL
Pressure, Temperature, Flow meter, Fluid Density
Quartz Gauge Pressure Measurement
Reservoir Saturation Measurements, Thermal Decay Services
Tubing Caliper Measurements
Memory PLT
Cement Bond Evaluation Log (CBL/VDL) Multi finger Caliper/Corrosion Measurements MULE Down hole
Tractor
Casing Guns High Shot Density Through Tubing Perforation TCP



Tubing Punchers
Through Tubing Plugs and Packers
Tubing Cutters
Pipe Cutters/Split Shot
Casing Patch
Other services offered are Drilling Technology Services

WELL COMPLETION SERVICES

Well Completion, in petroleum production, is the process of making a well ready for production (or injection). This principally involves preparing the bottom of the hole to the required specifications, running in the production tubing and its associated down-hole tools as well as perforating and stimulating as required. Sometimes, the process of running-in and cementing the casing is also included.

Lower completion

This refers to the portion of the well across the production or injection zone. The various broad categories of lower completion which are covered in our scope of services are listed below.

Barefoot completion Open Hole Open hole completion

Liner Completions Perforated Liner Perforated Casing

PROCUREMENT SERVICES

Prudential Concerns Services Nigeria Limited is one of the premier procurement services providers, helping organizations address all aspects of their procurement and sourcing operations to achieve savings and improved supplier relationships.

With years of experience building strategic sourcing best practices and bleeding-edge procurement processes, we have helped dozens of organizations realize millions of hard-naira savings in their procured products and services. All these helped increase efficiency, responsiveness, and flexibility in our supply-chain.

Many organizations are struggling to achieve their savings potential or implement strategic projects on time and to budget due to stretched resources or a shortage of skills in key areas such as procurement or project management.

Our procurement team brings unparalleled leadership and experience to developing proven supply chain solutions, ensuring that our clients receive what it promised, when it is promised, in a timely, well-executed manner.

Our procurement management examines expenditures - product-by-product and vendor-by-vendor - to gain a thorough understanding our client's operations and purchasing culture.

Prudential Concerns effectively manages the procurement of global projects large and small, creating top-to-bottom consistency throughout the entire logistics, delivery and installation process.

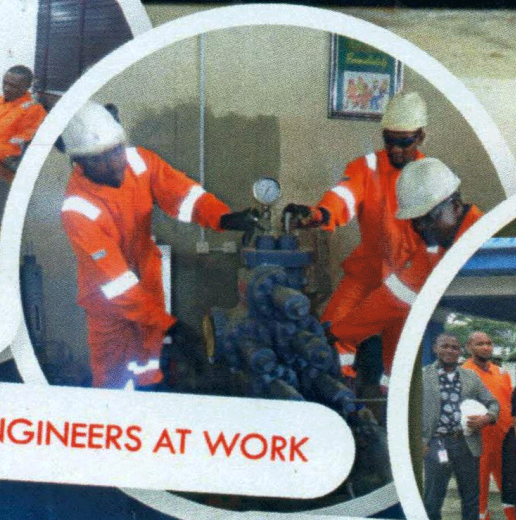




PPE REQUIRED



CONFERENCE ROOM



ENGINEERS AT WORK

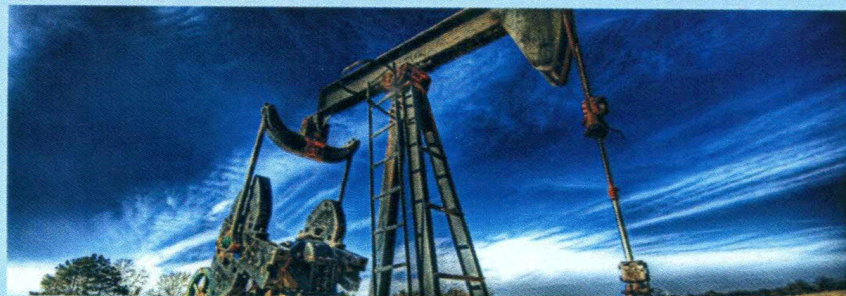


PSCL PERSONNEL

SPECIALTIES

We have expertise in providing engineers, expatriate & local engineers/European nationals in domain industries like oil & gas;

- Offshore
- Onshore
- Drilling
- Completion
- Work Over
- Well Intervention
- Well Services
- Exploration & Production
- Refinery
- Petrochemical
- Energy
- Pipeline
- Terminal
- Port & Infrastructure



TARGET INDUSTRIES/MARKET

Oil & Gas; upstream & downstream
Power Generation, transmission & distribution
Manufacturing Civil & Real Estate
Government agencies
Telecommunications Construction



OUR CLIENTS



TOTAL
COMMITTED TO BETTER ENERGY

seplat

Brittania-U
Nigeria Limited



**ADDAX
PETROLEUM**

ExxonMobil



NPDC



HSE-MS POLICY STATEMENT

The management of Prudential Concerns & Services Nigeria Limited (Herein Referred to as PCSL) is committed to conducting its operations in such a manner to prevent harm to its employees, the environment and all other people who may be connected directly or indirectly to PCSL's operations.

To achieve this, PCSL will maintain the highest practical standards of safety, Occupational health and protection of the environment and it's Host Community. It will continually adopt HSE-MS as an integral part of it primary business of providing oilfield services, well head's equipment-supplies, Maintenance & allied services locally & internationally to the oil and gas industry.

To achieve our target this year it will be required of all managers, supervisors and employee's direct involvement. We all need to commit ourselves to the achievement of our HSE-MS aspirations by diligently doing our work safely at all times, hence aspiring to meet ISO 14001:2004 – EMS and ISO 9001:2008 - QMS guidelines & expectations.



Considering the foregoing, the co-operation of all Personnel is highly solicited in the realization of this plan, and therefore I strongly advise that if there is any reason to consider a task unsafe, 'STOP' the work until effective corrective measures are put in place before continuing the operation.

QUALITY ASSURANCE & QUALITY CONTROL POLICY STATEMENT-(QA/QC)

It is the policy of PCSL to aim at an error-free work and client's satisfaction. The company (PCSL) does not aim at perfection, but works consciously towards the advancement of efficient performance. Therefore, deliberate measures are put in place to ensure that each assignment/work is executed with improvement in planning, quality, attention, and results.





#3 Fugro Avenue, Odani Road, Elemenwo,
Off Eleme-Onne Expressway, Port Harcourt.
P.O. Box 974, Woji, Port Harcourt.



info@prudentialconcernsltd.com
prudentialconcernsltd@yahoo.com



084-361595